



INDUSTRIAL MACHINES



DEBURRING



SANDING



POLISHING



CONTACT

Liège - BELGIUM

- ☎ +32 (0) 4 370 00 75
- ✉ sales.wl@extrom.net
- 📍 Z.I. Rue du Charbonnage, 11
B-4020 Liège (WANDRE)

CONTACT

Lichtervelde - BELGIUM

- ☎ +32 (0) 51 72 35 91
- ✉ sales.vl@extrom.net
- 📍 Industrielaan, 14
B-8810 Lichtervelde

CONTACT

Valenciennes - FRANCE

- ☎ +33 (0) 3 27 21 00 27
- ✉ idu@extrom.net
- 📍 Z.I. 2 BP 900
F - 59309 Valenciennes Cedex

BROCHURE

MACHINES



MACHINES

8 - 38

■ Deburring	8-19
■ Laser cut parts.....	10-11
■ Plasma cut parts	12-15
■ Tubes	16-19
■ Sanding	20-31
■ Dry	22-23
■ Wet.....	24-27
■ Tubes	28-31
■ Polishing	32-37
■ Polishing machines.....	34
■ Tubes	35
■ Other polishing machines.....	36-37



DEBURRING



SANDING



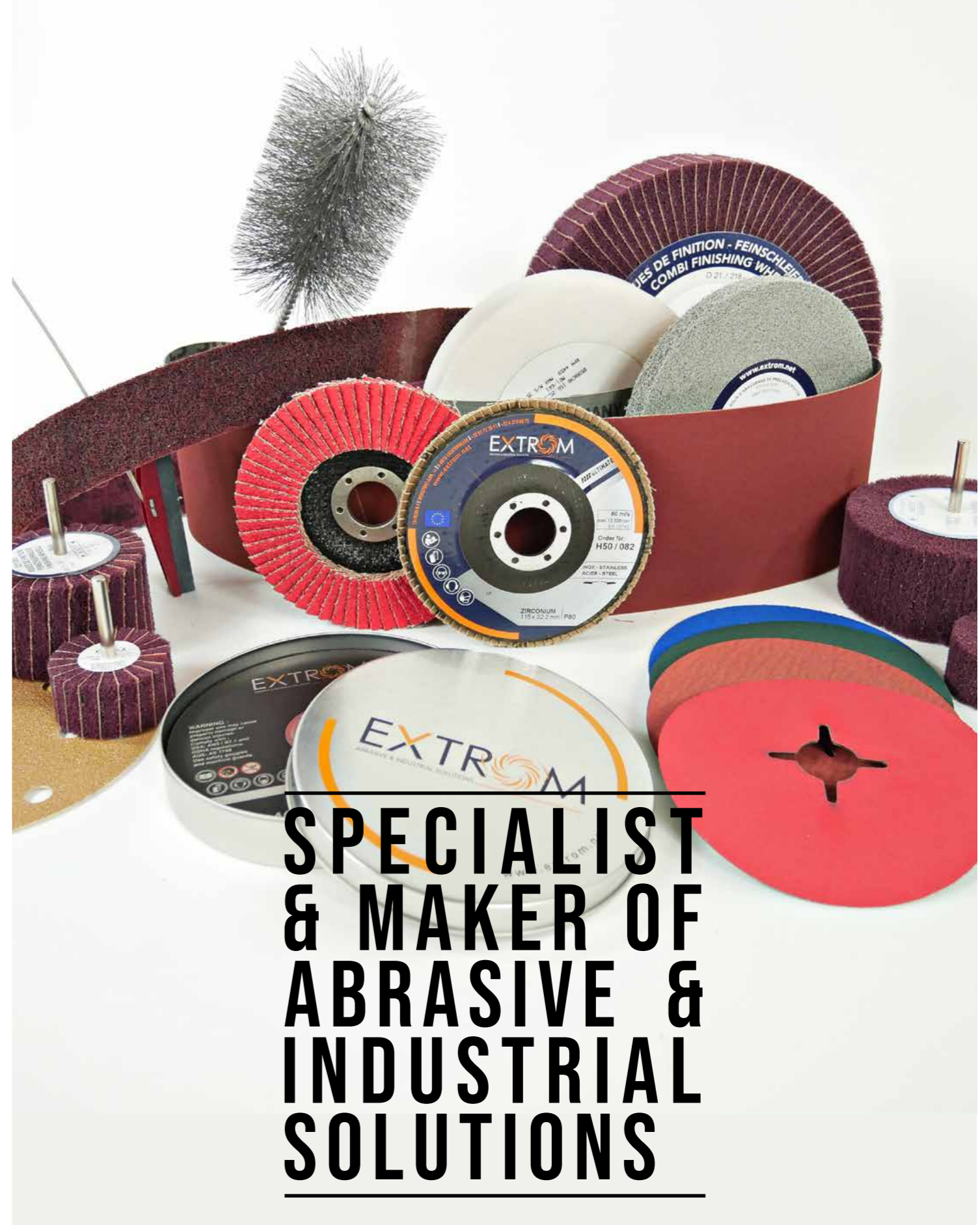
POLISHING

*For all applications, EXTROM brings you
the solution adapted to your needs!*



THE BELGIAN LEADER IN ABRASIVE SOLUTIONS

AND FOR EVERYTHING CONCERNING SATIN FINISHING, SANDING, GRINDING,
DEBURRING, BRUSHING, POLISHING, CLEANING OF STAINLESS STEELS, CUTTING,
DRILLING, MILLING, MACHINES, PPE, ETC



SPECIALIST & MAKER OF ABRASIVE & INDUSTRIAL SOLUTIONS



MACHINES

Deburring

DEBURRING

8 - 19

- Laser cut parts.....10-11
- Plasma cut parts.....12-15
- Tubes.....16-19



DM1100 ZC EVO

- Single-Sided
- Deburring & Edge Rounding
- Top Line Automated
- 1100mm Width

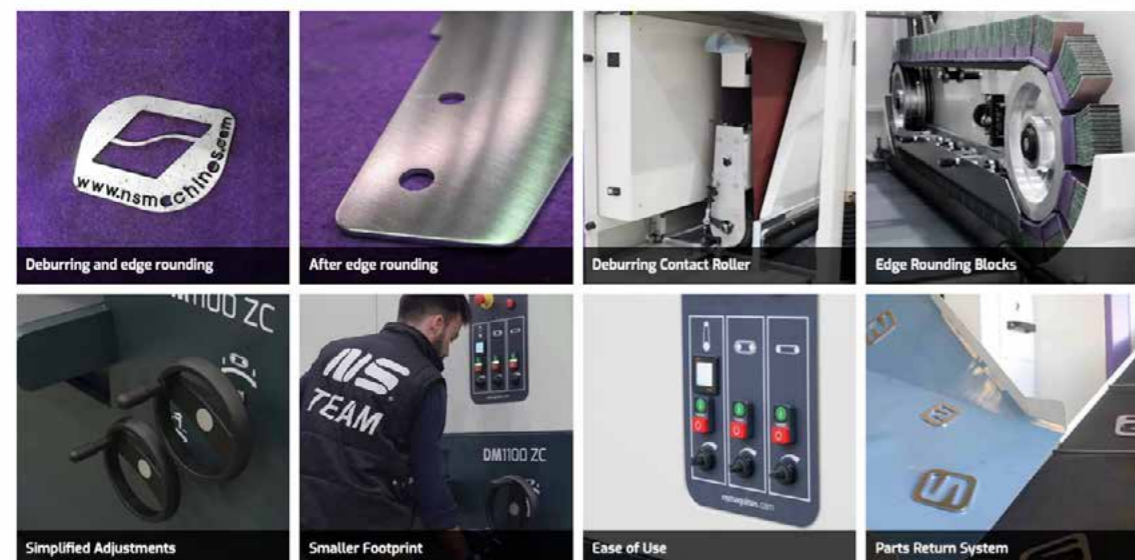
DM1100 ZC EVO are metal deburring and edge rounding machines for metal sheet and parts cut by punching, shearing, laser or plasma.

Removing burrs and creating round edges using cross belts technology is possible on parts up to 1100mm width and on some as small as 50x50mm.

Inside and outside contours of stainless steel, steel and aluminum parts cut by laser or other thermal processes are burrs cleaned from the total surface.



BENEFITS



DM1100 Z2C EVO

- Deburring and Double side Edge Rounding up to 1100mm
- Ideal for burrs removal and double side edge rounding up to 1100mm working width.

DM1100 Z2C EVO is a metal deburring and edge rounding machine. It deburrs and edge rounds inside and outside contours of stainless steel, steel and aluminum parts cut by laser, punching or shearing. This deburring machine operates from both side of the part, removing sharp edges on parts from 150mm length (double side operation) but also from parts as small as 50x50mm (single side operation). DM1100 Z2C EVO has an upper deburring station (contact roller) and a double cross belt head working both on the upper and lower sides of the part, leaving soft and clean edges on the 2 sides of the cut metal sheet in one single pass.



BENEFITS





DEBURRING

Plasma cut parts



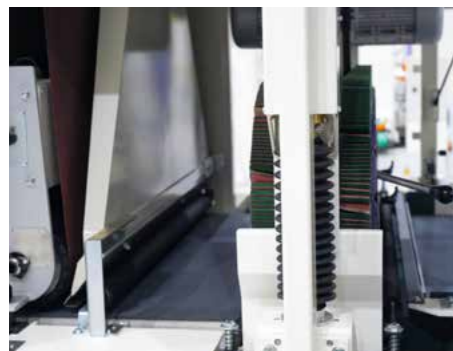
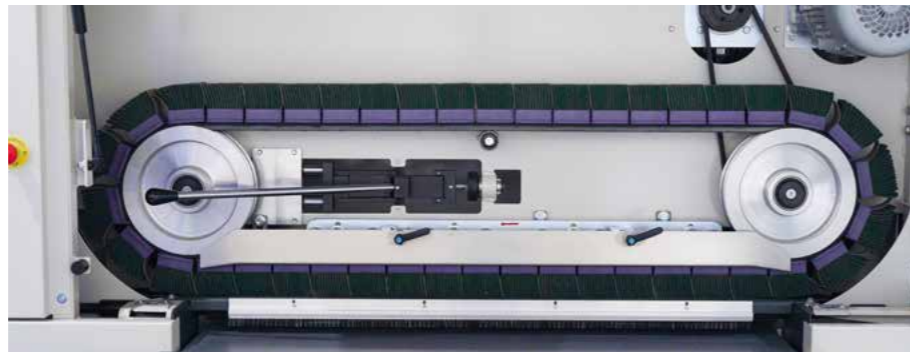
DM1600 Z

- Single-Sided
- Deburring or Surface Finishing
- Job-Shop Version
- 1600mm Width

The DM1600 Z is a high-performance deburring machine with a capacity of up to 1600mm in width. This machine can process a wide range of materials such as stainless steel, steel, and aluminum that have been cut through laser, punching or shearing.

Additionally, the DM1600 Z is equipped to handle surface finishing tasks, both with traditional abrasive paper or non-woven/scotch materials. With its ability to process metal parts as small as 50x50mm, the DM1600 Z is designed to maximize efficiency and productivity by processing more parts and/or larger components.

Furthermore, the DM1600 Z is designed to be easily integrated with the DM1600 C Edge Rounding Machine, allowing for a seamless and efficient process of deburring and edge rounding.



DM1100 DC EVO

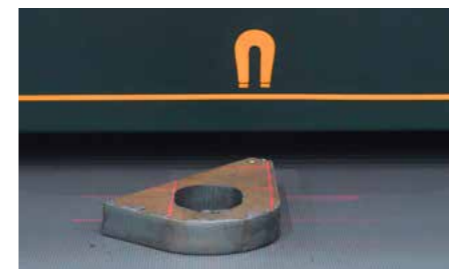
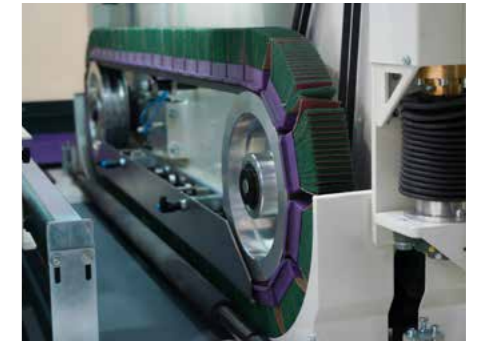
- Single-Sided
- Slag Removal & Edge Rounding
- Heavy-Duty Automated
- 1100mm Width

DM1100 DC EVO deburrs and edge rounds inside and outside contours of thick steel parts mainly cut by plasma or oxyfuel. DM1100 DC EVO has a large deburring drum for heavy burrs removal and a double cross belt head that performs edge rounding leaving soft and clean edges.

This deburring machine features drum fluctuation to cope with metal sheet tolerances and a wide magnetic area so small parts can also be deburred.

BENEFITS

- Deburring and rounding edges
- Heavy burrs deburring
- Floating system
- Smooth edges
- Small parts deburring
- Automatic abrasive wear compensation
- Control panel
- Automatic thickness measurement





DEBURRING

Tubes



OD 120 & OD 160

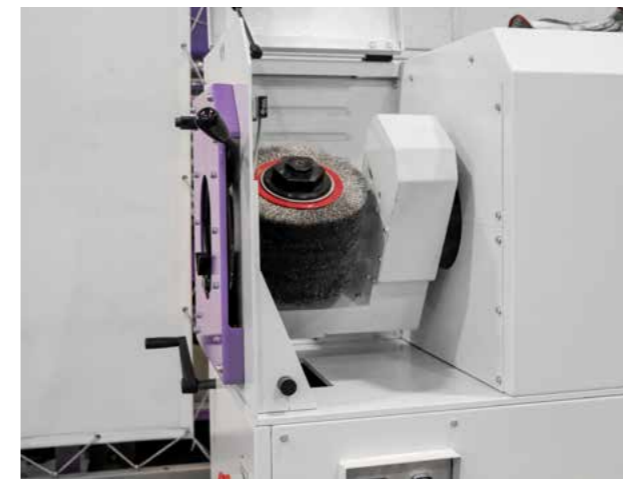
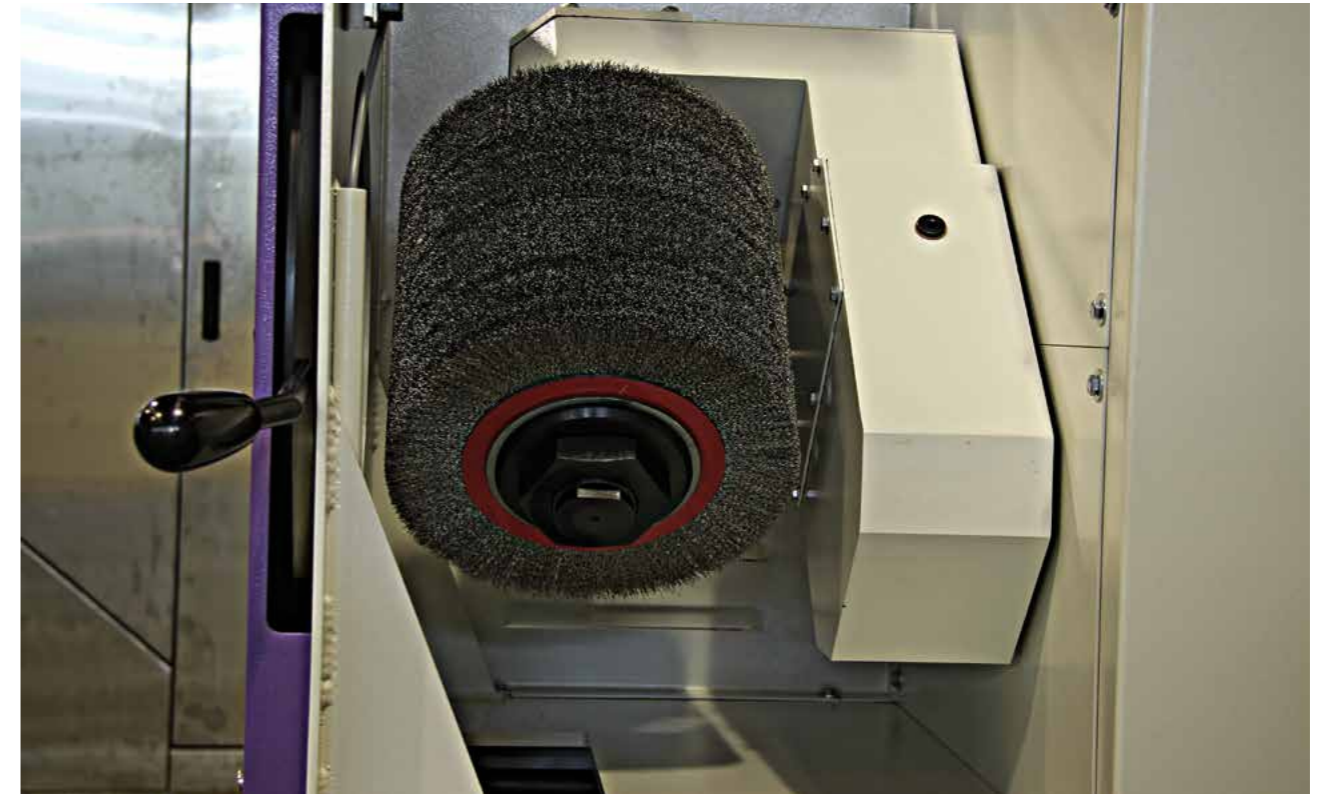
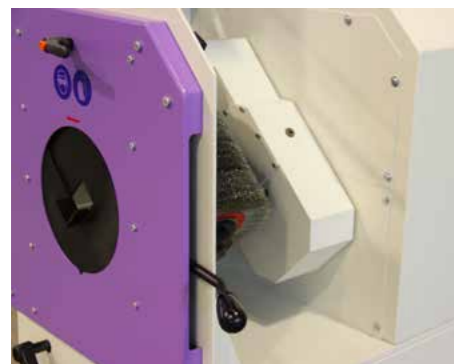
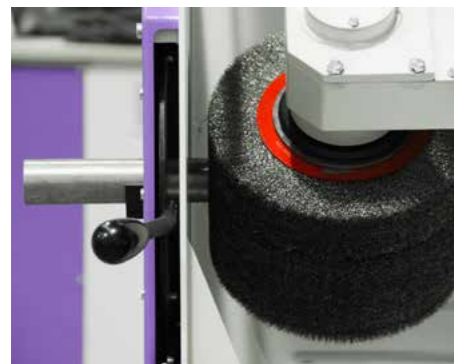
- Max 160mm
- Tube end deburring
- Round, square or profiles

Tube end deburring of round or rectangular tubes.

OD tube deburring machines clean and remove tube sharp edges caused by sawing. Enables simultaneous outside and inside tube burrs removal without rotating the tube. Deburs round, square, rectangular and many different tube and profile shapes deburring in few seconds.

BENEFITS

- Double rotation brush
- After cutting
- Different geometries
- Burr box
- Tube clamping system





MACHINES

Sanding

SANDING	20 - 31
■ Dry	22-23
■ Wet	24-27
■ Tubes.....	28-31

FC SERIES

- Max width 120mm
- Dry finishing
- 1-2 stations

Ideal for rectangular tubes and bars finishing up to 120mm width.

FC120 flat finishing machines were developed thinking in the simplicity of operation whenever flat bars, rectangular tubes or flat elements need to be belt finished or polished.

These machines enable the work up to 120mm width with a range of 2 possible combinations of belt heads and brushes.

FC120 Z has one abrasive belt unit, while FC120 ZK combines the abrasive belt head with an abrasive brush.

BENEFITS

- Abrasive belt head
- Abrasive brush head
- Square or rectangular tube finishing
- Flat bars finishing
- Single belt machine
- Quick abrasive belt replacement
- Transport of small items



"Our technical sales team will be happy to advise you according to your needs ..."

FG SERIES

Large capacity for rectangular tubes and bars finishing up to 330mm width.

FG330 flat bar and square tube polishing machines are equipments with a solid construction and ready for intensive work in bars or rectangular tubing.

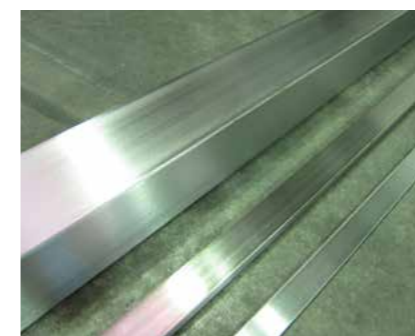
These machines enable the work up to 330mm width with multiple combinations of belt heads and brushes.

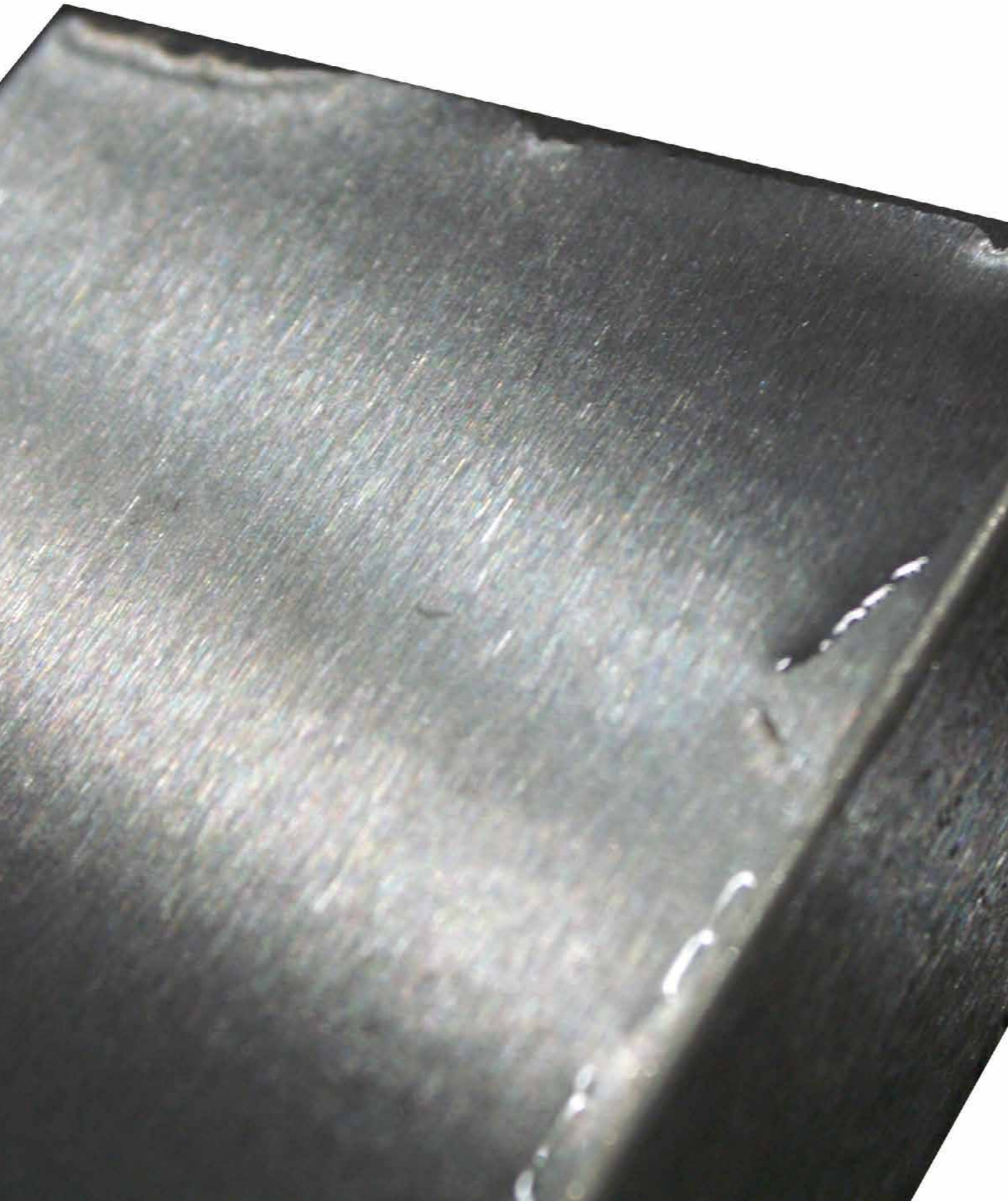
FG330 Z has one abrasive belt unit, while FG330 ZK combines the abrasive belt head with an abrasive brush. A double abrasive belt machine, FG330 2Z, and double abrasive belt plus brush, FG330 2ZK are also available.

Other options such as 3 abrasive belts or modification of order of belts and brushes can also be supplied.

BENEFITS

- Different configurations
- Abrasive brush head
- Square or rectangular tube finishing
- Flat bars finishing
- Quick abrasive belt replacement
- Fixed working height





SANDING

Wet



I FGW SERIES

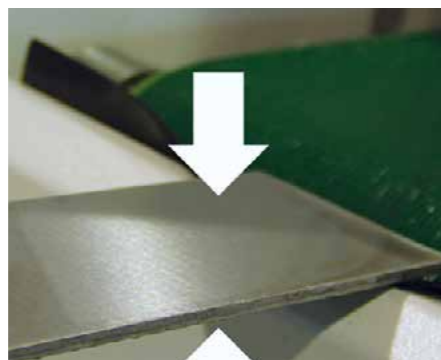
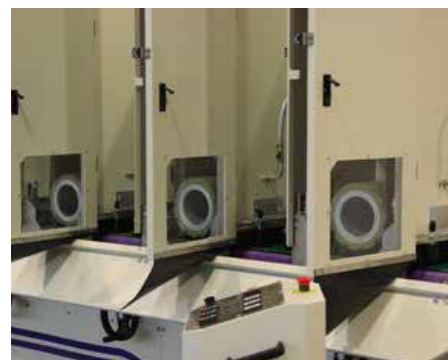
FGW330 flat surfaces and square tube polishing machines are equipments for surface finishing with water cooling made to polish bars, rectangular tubing and flat surfaces of various shapes.

These machines enable the work up to 330mm width with multiple combinations of belt heads and brushes.

The wet cooling system reduces the heat on the surface of the material and removes the dust from the polishing area. The dust is filtered from the water which operates in closed circuit.

FGW330 Z has one abrasive belt unit, while FGW330 2Z have 2 abrasive belt heads. A triple abrasive belt machine, FGW330 3Z is also available.

Other options such as abrasive belt plus brush units or higher number of abrasive stations can also be supplied.



"Our technical sales team will be happy to advise you according to your needs ..."



SANDING

Tubes



I ML SÉRIES

- Max Ø 114mm
- Straight and curved tube
- 1 station

Straight and curved round tube finishing up to Ø114mm with maximum flexibility and consistency.

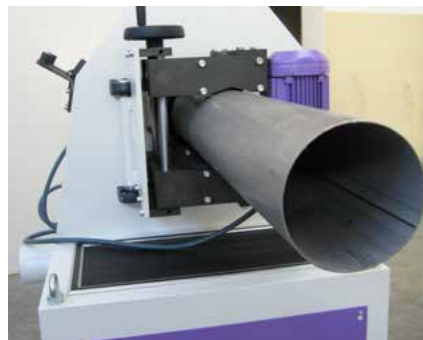
Tube polishing machine – ML100 – is the perfect choice for finishing the surface of round, oval, and elliptical tubes.

The ML planetary system allows the work to be done without rotating the tube, delivering the best results on both bent and curved tubes.

The auto feeding system transports straight tubes safely and automatically through the finishing station, delivering a consistent and highly productive tube polishing quality.

BENEFITS

- Minimum vibration even on the longest tubes
- Straight or curved tube polishing
- Quick set-up
- Low heat
- Oval tubes
- Finishing after tube drilling

**I MLW100 Z**

- Max Ø 114mm
- Straight tubes
- 2 up to 4 stations

Quality and productivity: straight tube, multi-station wet finishing up to Ø114mm.

The MLW100 Z round tube, multi-station wet finishing machine, available with 2 stations (MLW100 2Z), 3 stations (MLW100 3Z) and 4 stations (MLW100 4Z), is equipped with the ML planetary system and enables a faster finishing job than single-station machines.

Automatic work set-up and control of all the information about the tube finishing are done in a mobile panel with an integrated touchscreen. Completely independent finishing stations. Final finish in only one go.

The wet-operation system enables faster cooling of the tube as well as the possibility of working different types of metal simultaneously.

BENEFITS

- Minimum vibration even on the longest tubes
- Mobile touchscreen control
- Water-cooling system
- Solid and compact design
- Automatic filtration and pumping systems
- Manual loading and unloading tables





MACHINES

Polishing

POLISHING	32 - 37
■ Polishing machines.....	34
■ Tubes.....	35
■ Other machines of Polishing.....	36-37

PL 40 & PL 80 SERIES

- Belt grinding
- Wheel polishing
- Double motor
- Manual belt grinding and polishing machine for 1 or 2 operators

PL80 are high standard and low vibration polishing and belt finishing machines with double motor.

These machines are available in different configurations: ZP (1 abrasive belt plus one polishing wheel unit), PP (double polishing wheel unit) and ZZ (double abrasive belt).



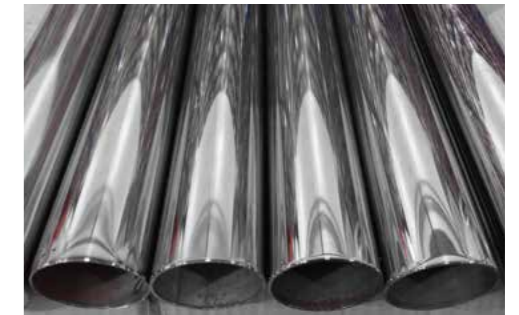
MP 100

- Max Ø 114mm
- Straight and curved tubes
- Round Tubes
- Straight and curved round tubes mirror polishing up to Ø114 with maximum flexibility and consistency.

MP100 round tube machine mirror polishes round tubes, straight or curved. Three planetary polishing wheels rotate around the tube making high pressure and delivering a high gloss mirror polishing, even in curved tubes.

The machine features brushes pressure control by foot pedal. This enables the operator to control the applied force during tube polishing operation.

The automatic feeding system transports straight tubes safely through the polishing units, enabling a consistent and high mirror polishing quality.



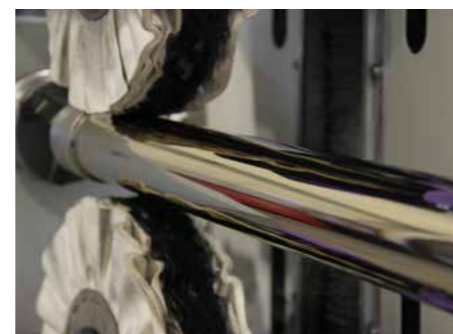
I PC70 2P

- Max 60mm
- Straight tubes
- Round and Square Tubes
- Round, square and rectangular mirror polishing up to 60mm with premium quality.

The PC70 2P allows a mirror polishing finish with high gloss quality of round, square and rectangular tubes.

The tube is clamped from its interior and the double polishing station travels through its length applying an high pressure on the tube without any marks or scratches.

PC70 2P comes in its standard version with automatic spray guns with pressurized polishing compound tank and with a max. tube size of 60mm and a max. 2m length, but other sizes and lengths can also be proposed by request.

**I RC200 + RC250**

- Max Ø 256mm
- Straight tubes
- Straight round tubes

Round tubes finishing and mirror polishing in one flexible machine.

RC200 and RC250 are centerless tube polishing and abrasive belt grinding machines which make finishing, buffing and mirror polishing in straight tubes and pipes with diameters up to 206mm and 254mm.

The quick change of contact roller for polishing wheel and the flexibility of design of RC in order to work under wet and dry condition makes it easy to do wet belt grinding and also tube gloss polishing in dry operation.





CONTACT

Liège - BELGIUM

☎ +32 (0) 4 370 00 75

✉ sales.wl@extrom.net

📍 Z.I. Rue du Charbonnage, 11
B-4020 Luik (WANDRE)

CONTACT

Lichtervelde - BELGIUM

☎ +32 (0) 51 72 35 91

✉ sales.vl@extrom.net

📍 Industrielaan, 14
B-8810 Lichtervelde

CONTACT

Valenciennes - FRANCE

☎ +33 (0) 3 27 21 00 27

✉ idu@extrom.net

📍 Z.I. 2 BP 900
F - 59309 Valenciennes Cedex